

# QUBO SERIES

THE  
PERFECT  
SHAPE  
OF LIGHT



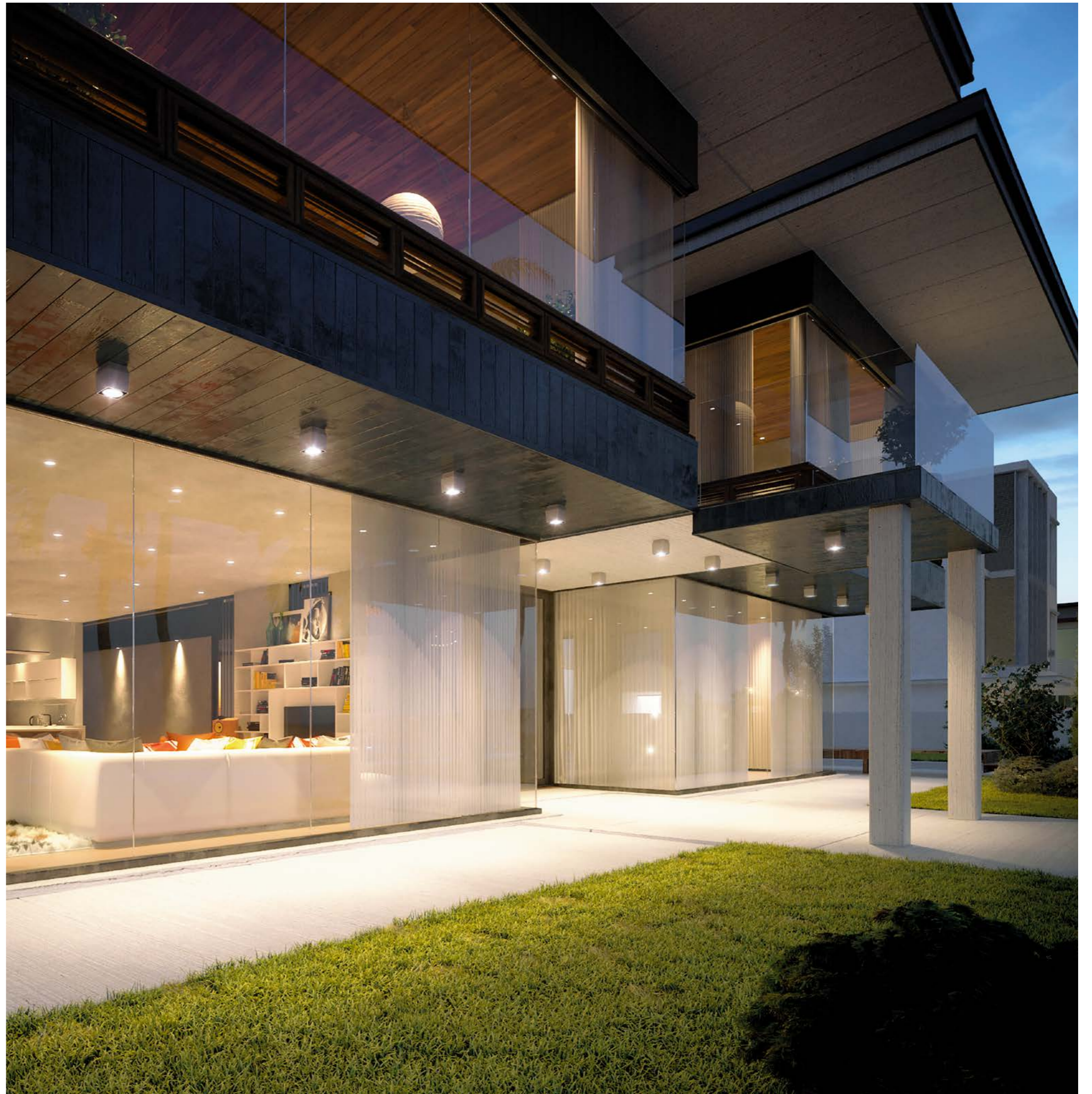


**HOW  
AMAZING  
CAN BE  
A CUBIC  
SHAPE  
FLOODLIGHT  
THAT  
CREATES  
A ROUND  
BEAM  
OF LIGHT?**

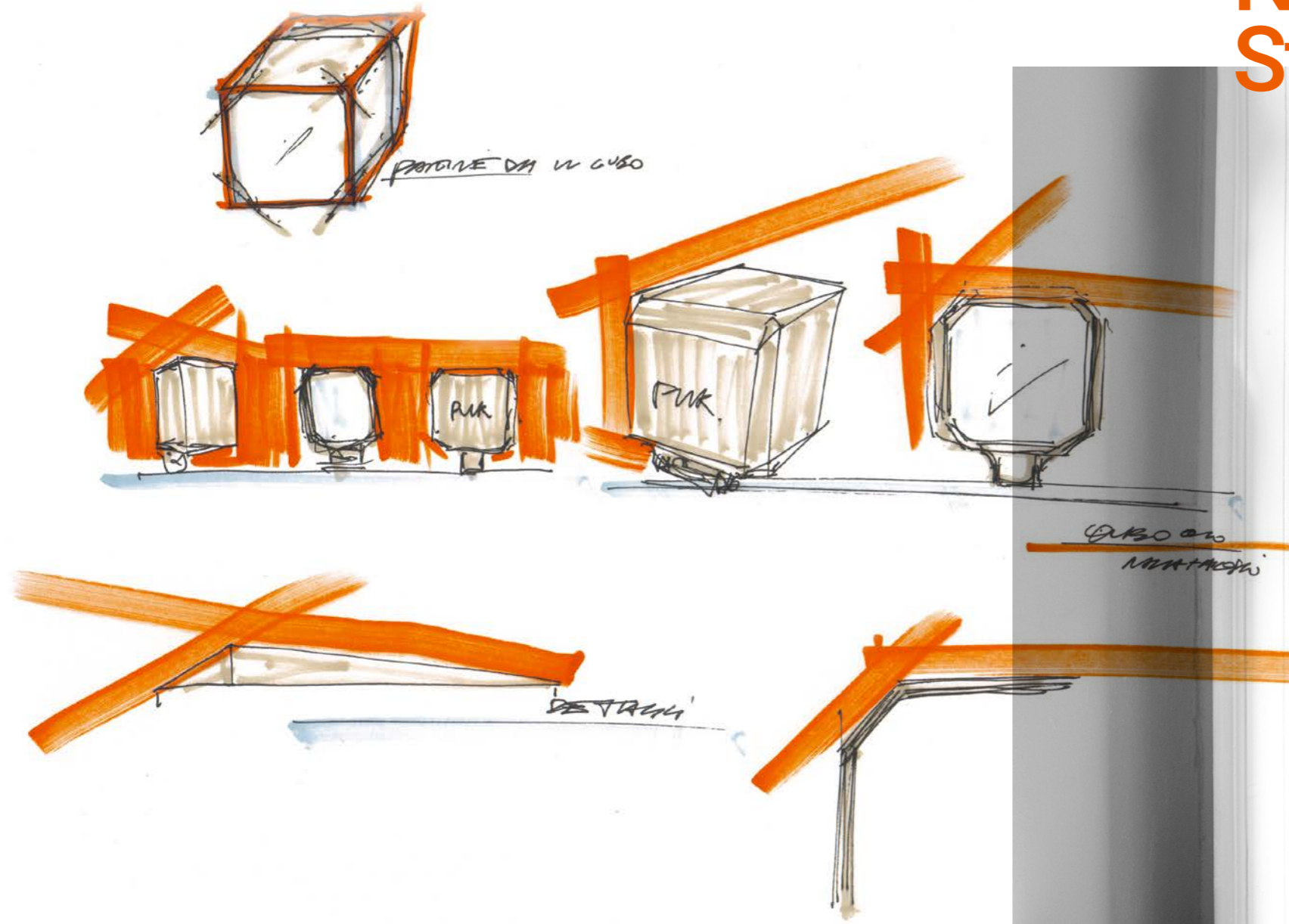


# The armony of the geometries is the key with this new fixture

DESIGNED BY NAVA+AROSIO  
STUDIO THAT COMES  
IN 4 SIZES TO HIGHLIGHT  
ARCHITECTURE DETAILS  
OR TO ENHANCE  
THE HEIGHT OF  
A BUILDING FACADE.



# designed by Nava+Arosio Studio



**PAOLO EMANUELE NAVA AND LUCA MARIA AROSIO  
ARE NAVA + AROSIO.**

WORKING ON DIFFERENT PROJECTS FOR PRESTIGIOUS FIRMS LIKE RUBELLI, LAGO, RIVA1920, ITALAMP AND IN COLLABORATION WITH PAOLO NAVA DESIGN STUDIO. THEY BEGIN TO EXPERIENCE A DESIGN IN WHICH THE PERSON IS THE CENTER WITH HIS/HER MATERIAL AND IMMATERIAL NEEDS. THE STUDIO HAS BEEN GAINING PRESTIGIOUS INTERNATIONAL AWARDS, WITH SEVERAL PROJECTS PUBLISHED BY THE MOST IMPORTANT MASTHEADS OF THE SECTOR.



**Mini, Micro,  
Medium  
or Maxi:  
a solution  
for every  
application  
can be found  
in the Qubo  
range.**

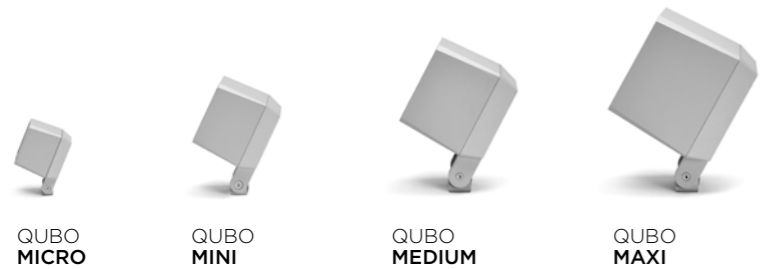
**101606**  
QUBO MEDIUM HP  
scale 1:1



As one of the protagonist  
of the new 2021 P.U.K.  
catalogue, Qubo is a surprising  
and elegant option for urban  
design and outdoor installation  
that perfectly integrates itself  
in architectural projects by  
giving the right improvement  
to the entire surrounding space.  
A kind of cinema effect where  
the projector is there  
to emphasize the center  
of the scene or to enlight  
the actor on stage:  
Qubo represents a way  
to give a final touch  
to a building with  
rigorous lines or to

**impress  
designer  
distinctive  
signature  
on a modern  
property.**

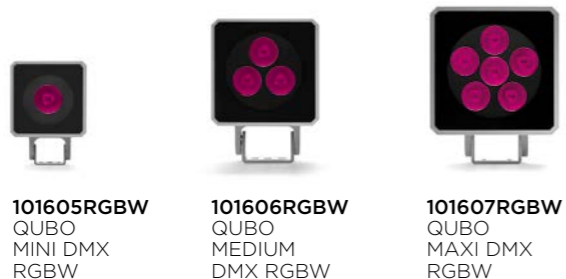




**QUBO MICRO** 60x60 mm h 84 mm  
**QUBO MINI** 100x100 mm h 84 mm  
**QUBO MEDIUM** 140x140 mm h 200 mm  
**QUBO MAXI** 170x170 mm h 230 mm



**101601 QUBO MICRO HP**  
**101605 QUBO MINI HP**  
**101606 QUBO MEDIUM HP**  
**101607 QUBO MAXI HP**



**101605RGBW QUBO MINI DMX RGBW**  
**101606RGBW QUBO MEDIUM DMX RGBW**  
**101607RGBW QUBO MAXI DMX RGBW**



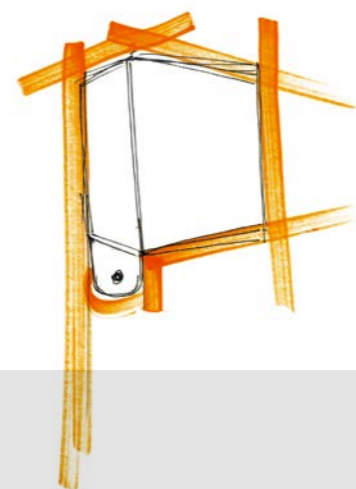
**101602 QUBO MINI COB**  
**101603 QUBO MEDIUM COB**  
**101604 QUBO MAXI COB**

**TECHNICAL DATA**

Floodlight for outdoor installation on a façade/wall, with U shape fixing bracket allowing vertical adjustment of +90° / -40°. Phospho-chromatised and polyester powder coated die-cast copper-free aluminium base and head, tempered safety glass, moulded silicone gaskets, with screws in stainless steel.



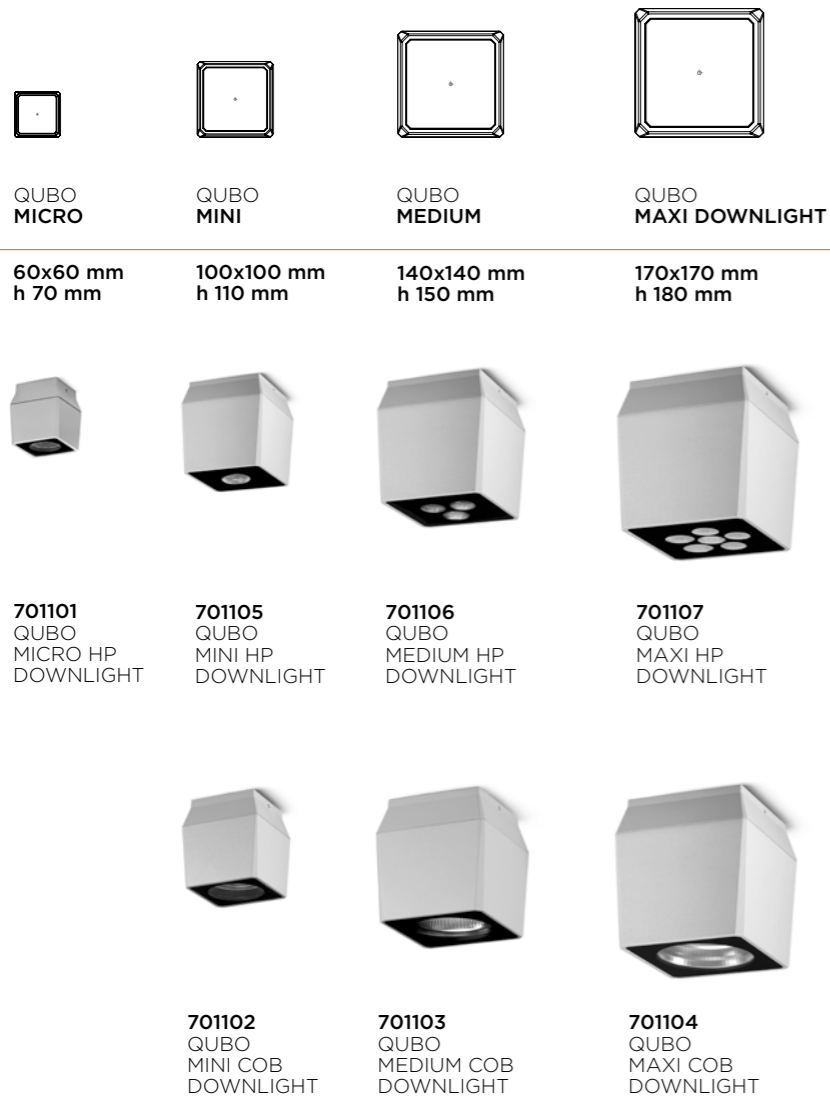
|                |  |             |
|----------------|--|-------------|
| WATT min - max |  | 4,5 - 42    |
| lumen package  |  | 145 - 5.265 |



# Qubo

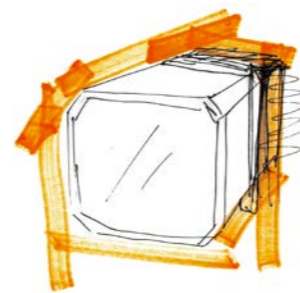
Cubic shape projector range composed by four sizes with infinite lighting variants, adapting to the most various fields of application.





#### TECHNICAL DATA

Round or square downlight for outdoor surface installation on the ceiling, phospho-chromatised and polyester powder coated die-cast copper-free aluminium body, tempered safety glass, moulded silicone gasket and stainless steel screws.



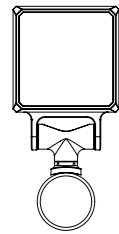
|                |  |             |
|----------------|--|-------------|
| WATT min - max |  | 10 - 30     |
| lumen package  |  | 474 - 5.265 |



# QUBO DOWNLIGHT

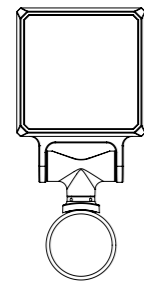
Cubic shape projector range composed by four sizes with infinite lighting variants, adapting to the most various fields of application.





QUBO  
MEDIUM

140x140x224 mm



QUBO  
MAXI DOWNLIGHT

170x170x254 mm



701103  
QUBO  
MEDIUM COB  
DOWNLIGHT



701104  
QUBO  
MAXI COB  
DOWNLIGHT



701106  
QUBO  
MEDIUM HP  
DOWNLIGHT



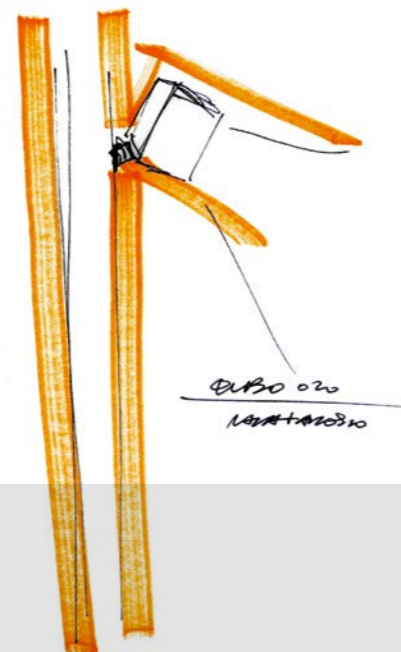
701107  
QUBO  
MAXI HP  
DOWNLIGHT

#### TECHNICAL DATA

Round or square downlight for outdoor surface installation on the ceiling, phospho-chromatised and polyester powder coated die-cast copper-free aluminium body, tempered safety glass, moulded silicone gasket and stainless steel screws.



|                |  |             |
|----------------|--|-------------|
| WATT min - max |  | 10 - 30     |
| lumen package  |  | 474 - 5.265 |



# QUBO POLE

Further demonstration of how versatile is Qubo series, check it in pole mounted version with its new discrete and elegant pole attachment.



Not simple accessories but real allies for your lighting project. Reveal the existing and leave your lightmark in every project.

**FINISH COLOR OPTION**



**Step by step,  
towards the  
solution**

Our professional staff will assist you in designing efficient and reliable solutions thanks to 30 years of experience in design consultancy and technology manufacturing at international level.

- FEASIBILITY STUDY**
- PRELIMINARY PROJECT**
- FINAL PROJECT**
- EXECUTIVE PROJECT**

**PUK ITALIA GROUP**

Via San Giorgio, 16 | 20851 Lissone (MB) Italy  
T. +39 039 2457920 | F. + 39 039 2457924  
puk@puk.it

